

Landlords can charge for gas and electric with Topupmeters dual fuel smart meters.

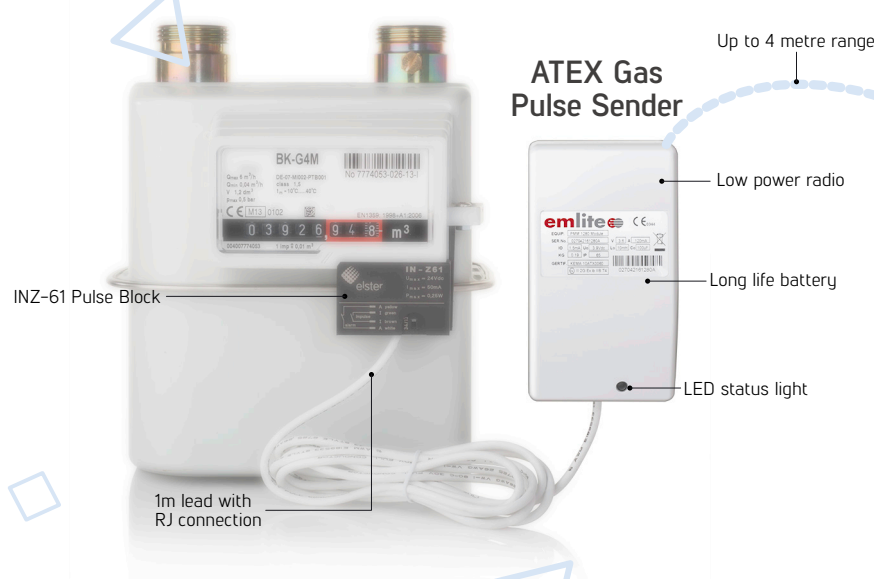
The ATEX approved Gas Pulse Sender collects pulses from a gas meter and transmits to a nearby Topup electric meter.

Consumers topup a single wallet for both utilities. Charges for gas and electric usage are deducted from the balance with a dual fuel tariffs set from the web portal.

FEATURES

- ATEX Approved intrinsically safe data logger and transponder
- 4 Metre wireless range with optional cable extender
- 10 year battery life
- Gas tariffs stored in electric meter
- Recover additional standing charges

Elster BK-G4 U6 Diaphragm Gas Meter
With INZ-61 Pulse Output



Emlite Topup GPRS Smart Prepayment Meter



To begin recharging for gas, the property requires a Topup electric meter, and its own metered gas supply.

The ATEX approved pulse sender collects pulses from the gas meter, then wirelessly sends to the nearby electric meter where charges are deducted from the balance.

The Gas Pulse Sender has a 10 year battery life and 4 metre wireless range for reliable and robust dual-fuel prepayment.

Landlords set tariffs for gas from the web portal in the same way as for electric.

When the balance reaches £0 the electricity goes off. Any gas used will accrue a debt which is paid off from the next topup.

Check gas reading and charges from the meter or online from the Topup Portal.



Some gas meters like the Sensus U6 can easily be retrofitted for gas prepayment without needing replacement or a gas engineer.

I have a HMO, does each flat need its own gas meter?

Each property within the HMO will need a sub-meter for gas, plus a Topup electric meter.

Can I charge for gas on its own?

Charging for gas only works with a paired Topup electric meter.

I already have a gas sub-meter, will this work?

It depends if the existing gas meter is compatible with an external pulse module. Some meters allow for this but not all. A replacement gas meter will be required if the existing meter is not compatible.

Can the range be extended between the Pulse Sender and Topup meter?

RJ cables can be extended up to 50metres to bring the pulse sender nearer the electric meter

Is gas disconnected when credit runs out?

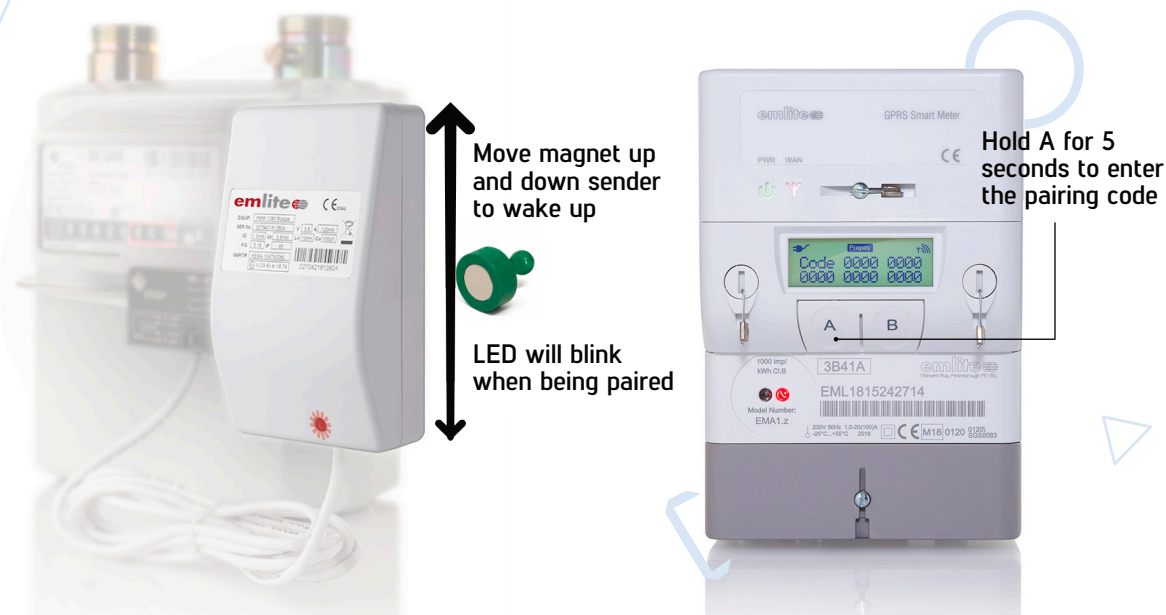
When credit runs out the electric is disconnected. A topup will need to be made to stay on supply or use Emergency Credit. The gas supply is not cut off but a debt will accrue for any gas that gets used.

Most gas appliances will require electricity to work therefore its not necessary to cut off the gas.

Fitting

Before any work can be carried out you must ensure you have all the equipment needed to make a successful installation. These are:-

- 1 Emlite EMA1.x Topup Smart Meter MC11 Module
- 2 Gas meter or other pulsed output meter
- 3 ATEX Gas Pulse Sender Unit
- 4 Magnet to initiate programming
- 5 6 digit PIN number



Installation Steps

Before connecting the pulse sender it will need pairing to a Topup meter. You will need a small magnet to 'wake up' the sender after entering the pairing code.

- 1 Hold A for 5 seconds
- 2 Enter the pairing code using the A/B buttons
- 3 On ✕ press A. The screen will say "Binding Sender"
- 4 Use the magnet to 'wake up' the sender. The display will show "Binding Successful"

Warning: Do not attempt to bind the unit to Smart Meter while it is connected to the gas meter. All programming and commissioning must take place outside of the hazardous zone

Ordering

Meters can be ordered as complete pre-bound kits, or individually for retrofit.

Contact us to find your local distribution partner. And for a quotation.

Technical Data

Dimensions	H x W x D (mm) Weight	70 x 50 x 35 (mm) 200g
Battery	Type Lifetime	Lithium Polymer 10 years
Cable	Length Connector type	100 cm RJ10
Pulse	Min duration Type	200ms Open collector
Utilities	Gas	Including LPG
Radio	RF	868Mhz

Manufactured in the UK by EM-Lite Ltd



ATEX Approved Gas Sender Unit

Model: PMM1280

