

Datasheet

Cobra LED Fly Killers

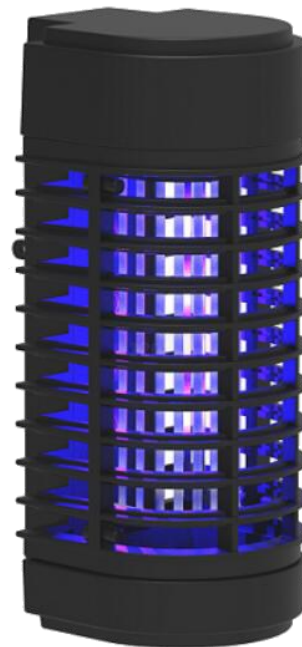


The Cobra LED fly killer range has everything you need to meet your requirement. The range has indoor wall mounted units, a plug in unit, rechargeable units, Stainless Steel food grade units and IPX4 outdoor unit. Using this range, you can choose the best solution be in a plug in domestic unit for your kitchen or a Stainless Steel food grade for a commercial/industrial kitchen.

Cobra Plug in LED Fly Killer

- Ideal for home, office, kitchen, restaurant, hotels etc
- Built in plug on back to easily fit BS sockets
- Full protective outer mesh for safety
- Sleek curved design

Code	FKLEDPLG50
Rated Power	3W
Input Voltage	230V
Lamp Type	4 X UV-A LED's
Coverage	50 M ²
Dimensions	110 X 87 X 200mm



- ABS Fireproof Plastic
- Direct plug in for easy operation
- 180° range
- Removeable catchment tray
- Easily wiped clean
- Ideal for home or office use
- Guard prevents fingers touching grid
- Indoor use only

Cobra Rechargeable LED Fly Killer

- Ideal for gardens, parks, hiking or camping when sockets are not available (Note—these are not IP rated)
- Supplied with charging lead
- Switchable to white light to act as a lantern or for emergency lighting
- Full protective outer mesh for safety

Code	FKLEDPR50
Rated Power	1.5W
Input Voltage	230V charger
Lamp Type (blue)	5 X UV-A LED's
Lamp Type (white)	10 X White LED's
Coverage	50 M ²
Dimensions	110 X 87 X 200mm



- ABS Fireproof Plastic
- Rechargeable
- 360° range
- Removeable catchment tray
- Easily wiped clean
- Ideal for garden or park use
- *Not these are not IP rated so should not be left outside*
- Multi function switch to change from UV-A LED to White LED
- Guard prevents fingers touching grid
- Supplied with handle
- Charging time—4 hours
- Up to 20 hours use when fully charged

Cobra Outdoor LED Fly Killer

- Ideal for gardens, pubs, restaurants and other outdoor areas
- Handy hook at top for suspension
- Can also free stand if required
- Full protective outer mesh for safety
- Supplied with 1.5m power lead

Code	FKLEDOD160
Rated Power	8W
Input Voltage	230V
Lamp Type	8 X UV-A LED's
Coverage	160 M ²
Dimensions	190 X 190 X 350mm
IP Rating	IP X4



- ABS Fireproof Plastic
- 360° range
- Removeable catchment tray
- Easily wiped clean
- Ideal for outdoor situations areas such as garden, BBQ areas or beer gardens
- Can also be used for indoor use
- Guard prevents fingers touching grid
- Slim attractive design

Spare Tubes for Above

Code	FKLMPOD160
Rated Power	8W

Cobra Indoor LED Fly Killers

- Ideal for home, office, kitchen, restaurant, hotels etc
- Slim attractive design
- Full protective outer mesh for safety

Code	FKLED100	FKLED150
Rated Power	6W	8w
Input Voltage	230V	230v
Lamp Type	8 X UV-A LED's	12 X UV-A LED's
Coverage	100 M ²	150 M ²
Dimensions	305 X 108 X 260mm	480 X 113 X 265mm

- ABS Fireproof Plastic
- Freestanding or Suspended
- 360° range
- Removeable catchment tray
- Easily wiped clean
- Ideal for home or commercial use
- Guard prevents fingers touching grid
- 2500V for effective killing
- 20,000 hour tube LED life
- Indoor use only



Cobra Black Commercial Fly Killer Range

- Ideal for home, office, kitchen, restaurant, hotels etc
- Slim attractive design
- Full protective outer mesh for safety
- Supplied with Built in LED's

Code	FKCOM100BK	FKCOM150BK
Rated Power	11W	13W
Input Voltage	230V	230v
Lamp Type	11 X UV-A LED's	12 X UV-A LED's
Coverage	100 M ²	150 M ²
Dimensions	350x105x270mm	500X105X270mm

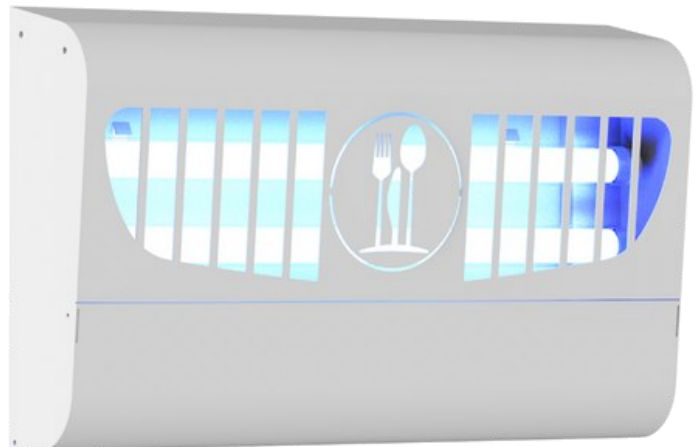
- ABS Fireproof Plastic
- Freestanding or Hanging
- Supplied with Wall Brackets
- 360° range
- Removeable catchment tray
- Easily wiped clean
- Ideal for home or commercial use
- Guard prevents fingers touching grid
- 4,000V grid for effective killing
- 20,000 hour tube LED life
- Indoor use only



Cobra Wall Mounted LED Fly Killer

- Ideal for restaurants, bakery, cafes, pubs, shops and many more
- Wall Mounted
- Neat finish
- Full protective outer mesh for safety
- Supplied with 1.5m power lead

Code	FKGBW100
Rated Power	14W
Input Voltage	230V
Lamp Type	8 X 7W LED Tube using UV-A LED's
Coverage	100M ²
Dimensions	480 X 290 X 103mm
Type	Glue Board
Mounting	Wall Mounted



- White powder coated iron body
- 180° range
- Replaceable glue board
- Easily wiped clean body
- Ideal for wall mounting in any indoor situation—office, restaurant, café, shops etc
- Guard prevents fingers touching bulbs or glue board
- Slim attractive design

Spare Tubes for Above

Code	FKLMPSS100
Rated Power	7W

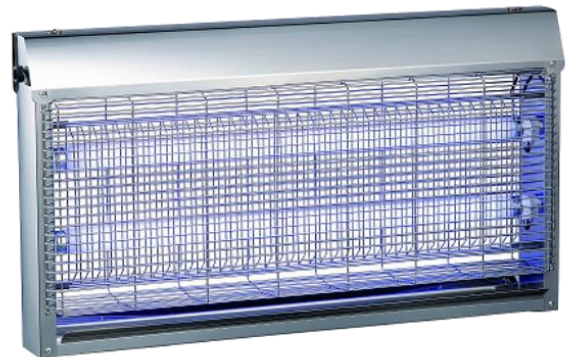
Spare Glue Boards for Above

Code	FKGB100
-------------	---------

Cobra Stainless Steel Food Grade LED Fly Killers

- Designed to meet standards for food preparation areas
- Full Stainless Steel Body
- Supplied with Shatter Proof LED Tubes
- High Efficiency Electric Grid
- For indoor use only
- Ideal for food industry, supermarkets, café's etc

Code	FKLEDSS100
Rated Power	14W
Input Voltage	230V
Lamp Type	2 X 7W UV-A LED Tubes
Coverage	100 M ²
Dimensions	525 X 115 X 330mm
Type	Electric Grid + LED Light
Mounting	Wall/Suspended/ Free Standing



- Stainless Steel Body
- 360° range
- Removeable catchment tray
- Easily wiped clean
- Indoor use only
- Protective guard prevents fingers touching grid
- Replaceable 7W Shatterproof UV-A LED Tubes

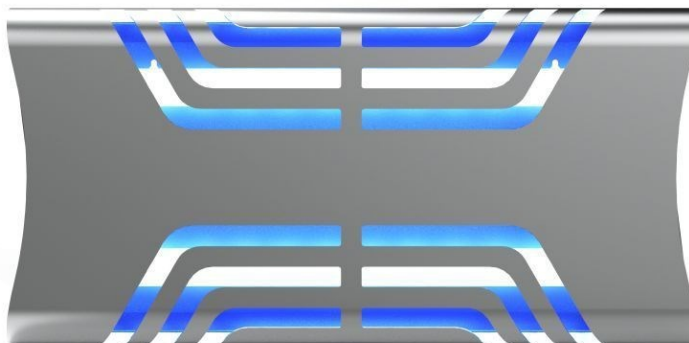
Spare Tubes for Above

Code	FKLMPSS100
Rated Power	7W

Cobra Stainless Steel Food Grade LED Fly Killers—Glue Board

- Designed to meet standards for food preparation areas
- Full Stainless Steel Body
- Supplied with Shatter Proof LED Tubes
- Sticky Glue Board for clean killing
- For indoor use only
- Ideal for food industry, supermarkets, café's etc

Code	FKARES100
Rated Power	14W
Input Voltage	230V
Lamp Type	2 X 7W UV-A LED Tubes
Coverage	100 M ²
Dimensions	505 x 600 X 250MM
Type	Glue Board
Mounting	Wall Mounted



- Stainless Steel Body
- 180° range
- Replaceable glue board
- Easily wiped clean
- Indoor use only
- Replaceable 7W Shatterproof UV-A LED Tubes

Spare Tubes for Above

Code	FKLMPARES
Rated Power	7W

Spare Glue Boards for Above

Code	FKGBARES
-------------	----------