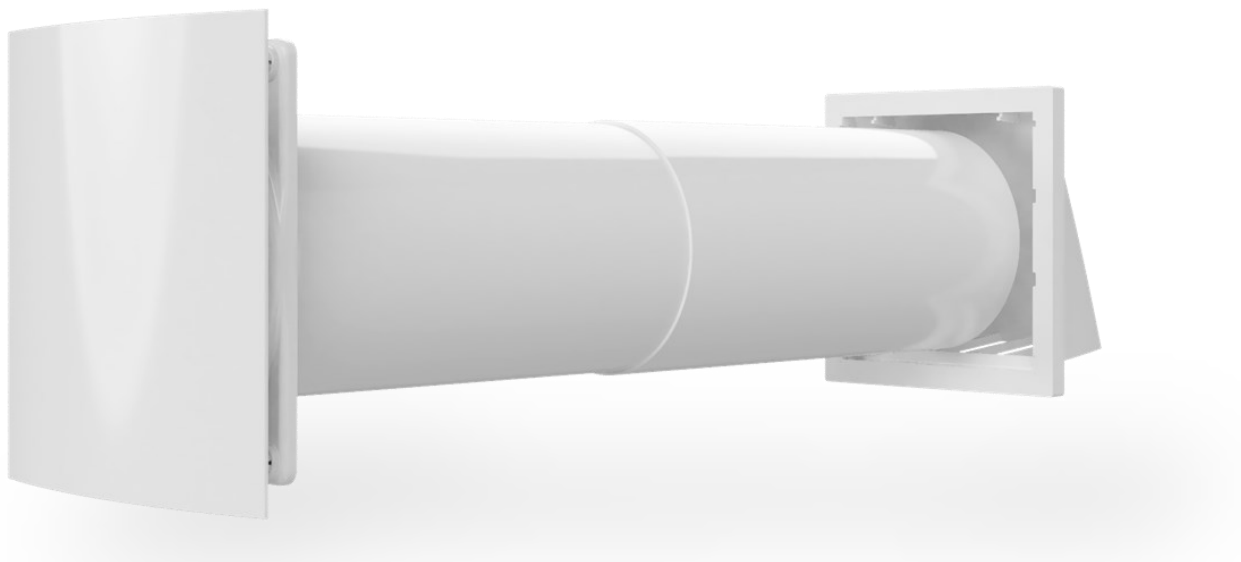


Datasheet

CUPER Heat Recovery Unit



The CUPER Heat Recovery Unit is designed to increase air circulation while incorporating a heat recovery system to ensure heat lost through extraction is not lost and also air coming in is heated to avoid drawing in cold air. It comes as standard with filters to remove dust, pollen and other allergens from the air entering the room.

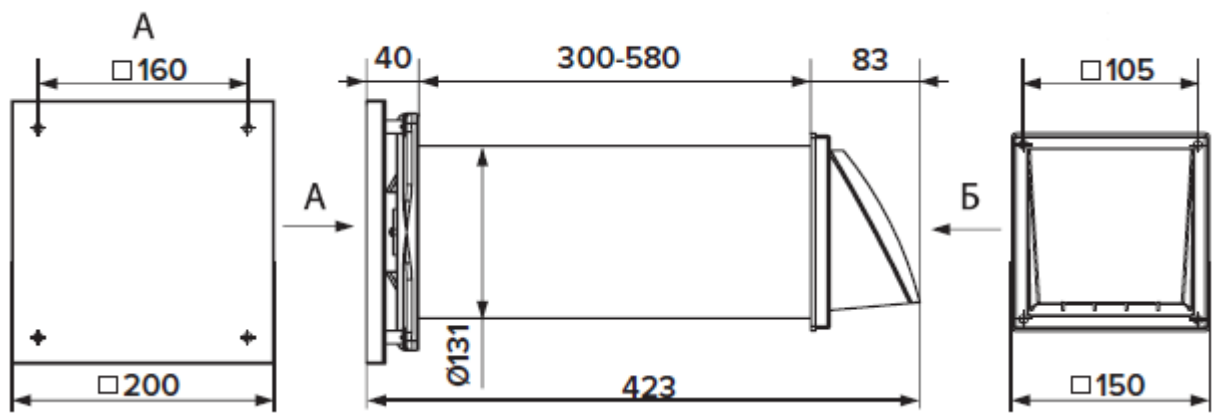
CUPER Heat Recovery Unit

Operating Specifications

- For use with external air temperature of -30°C to $+50^{\circ}\text{C}$
- For use with room temperature of $+1^{\circ}\text{C}$ to $+40^{\circ}\text{C}$
- Filters dust and other solid impurities with a content within $10\text{mg}/\text{m}^3$
- Intake and Extract unit
- Six Speed motor
- Supplied with Remote Control
- Net Weight—2KG
- Efficiency of up to 82%
- 220—240V
- 50/60Hz
- IP24

**BREATHE CLEAN AIR:
SMART CONTROLLED VENTILATION
WITH AIR TEMPERATURE CONTROL**

Characteristics	CUPER 125					
Speed	1	2	3	4	5	6
Productivity (m^3/hour)*	19	31	41	49	57	63
Pressure (Pa)*	11	23	35	48	59	73
Working power (W)	1	2,3	3,3	5,1	6,9	9,4
Noise level (dBA)	25	27	29	31	33	36



CUPER Heat Recovery Unit



HEAT RECOVERY UNIT

CUPER

- Works regardless of exhaust systems
- Blocks out street noise
- IR remote control
- Timer for setting up the operation of the device according to the schedule
- Synchronization of up to 10 devices into a single ventilation system
- Diameter 125 mm (5")



Device and principle of operation

