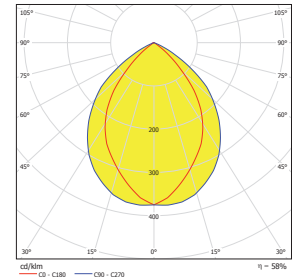
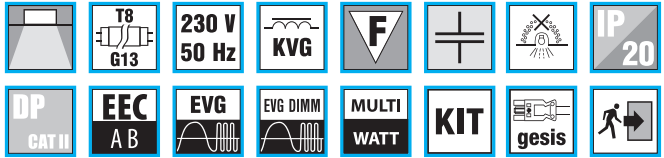
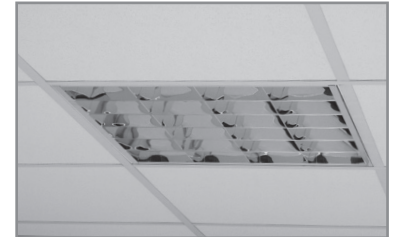


IT8



I418ALDP

I418ALDP



Recessed louvre fittings for T8 lamps

Body:

White painted (RAL 9003) metal sheet

Optic (&):

ALDP - double parabolic louvre category C2 of highly polished aluminium

MATDP - double parabolic louvre category C2 of mat aluminium

AL - parabolic louvre of highly polished aluminium with mat aluminium cross blades

ALMAT - parabolic louvre of mat aluminium

B - white parabolic louvre

ALS - parabolic louvre of highly polished aluminium with mat-ribbed cross blades

ALSMAT - parabolic louvre of mat aluminium with mat-ribbed cross blades

Wiring (#):

compensated, ballast cat. B (standard)

EP - high frequency ballast HFB

EPSA - HFB analogue dimmable (1-10 V)

EPSD - HFB digital dimmable TRIDONIC ECO

EPSDD - HFB digital dimmable DALI

Application:

Recessed light fitting for installation into false ceiling with visible supporting structure (600x600/625x625 modules) or gypsum plasterboard.

Accessories:

Fixing clips for installation into gypsum plasterboard – 54214.

Reduction frame for installing light fitting module 600 into false ceiling module 625.

Versions (@):

600 - for 600 module

625 - for 625 module

ISO - external connection board ISODOM

KIT - external connection board BJB

K - with WIELAND connector

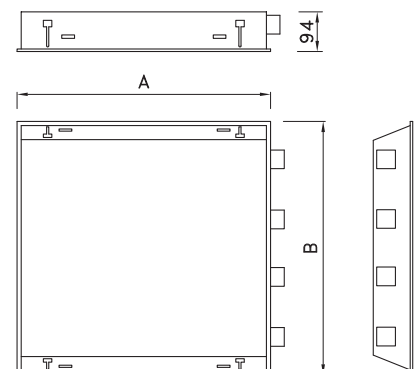
F - with flexible cord

NZ - emergency pack

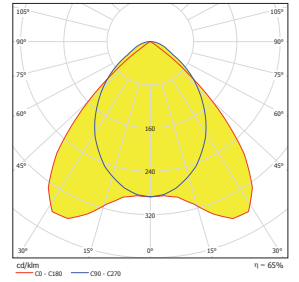
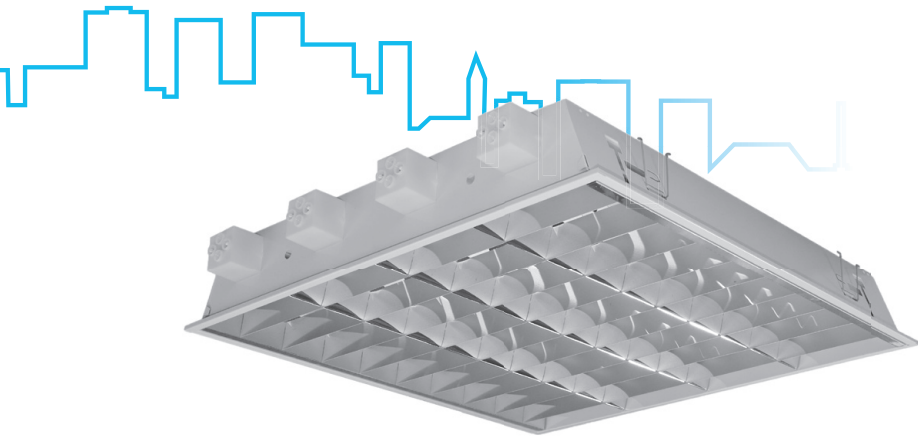
OK - double-circuit wiring

For more info see pages 18-19.

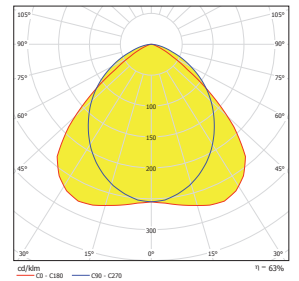
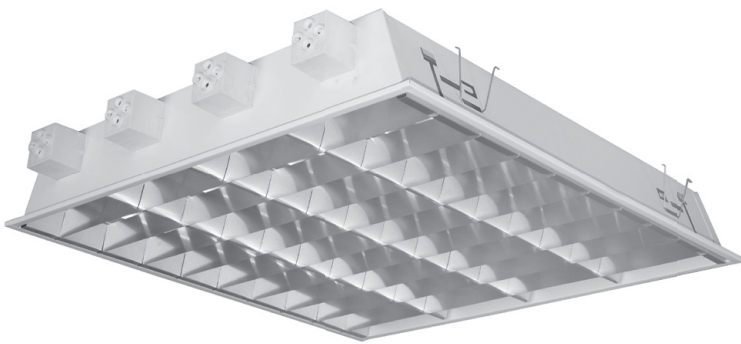
T8	W	Modul 600			Modul 625			kg
		A	B	□	A	B	□	
I118 &#@	1x18	596	184	576x164	622	184	602x164	2,1
I218 &#@	2x18	596	296	576x276	622	310	602x290	2,5
I318 &#@	3x18	596	596	576x576	622	622	602x602	4,8
I418 &#@	4x18	596	596	576x576	622	622	602x602	4,9
I136 &#@	1x36	1196	184	1176x164	1246	184	1226x164	2,9
I236 &#@	2x36	1196	296	1176x276	1246	310	1226x290	4,9
I336 &#@	3x36	1196	596	1176x576	1246	622	1226x602	9,1
I436 &#@	4x36	1196	596	1176x576	1246	622	1226x602	9,5
I158 &#@	1x58	1496	184	1476x164	1546	184	1526x164	3,9
I258 &#@	2x58	1496	296	1476x276	1546	310	1526x290	6,1
I458 &#@	4x58	1496	596	1476x576	1546	622	1526x602	12,0



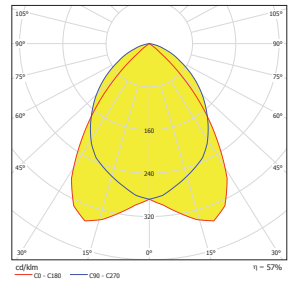
Optic system of IT8



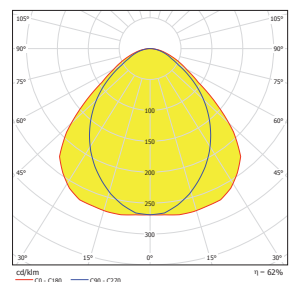
AL



ALMAT



ALS



B